



# MONTHLY MEMBERSHIP PROGRESS REPORT

District 3231A1

Results as of: 05/31/2019

GMT: JAYESH THAKKAR

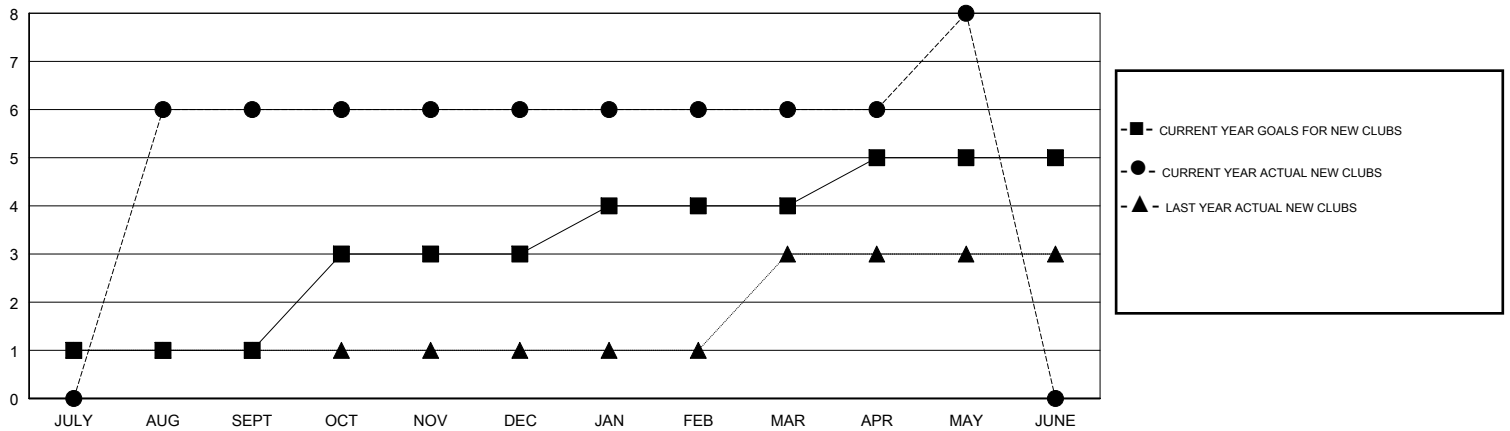
LOCATION INDIA

GMT CA

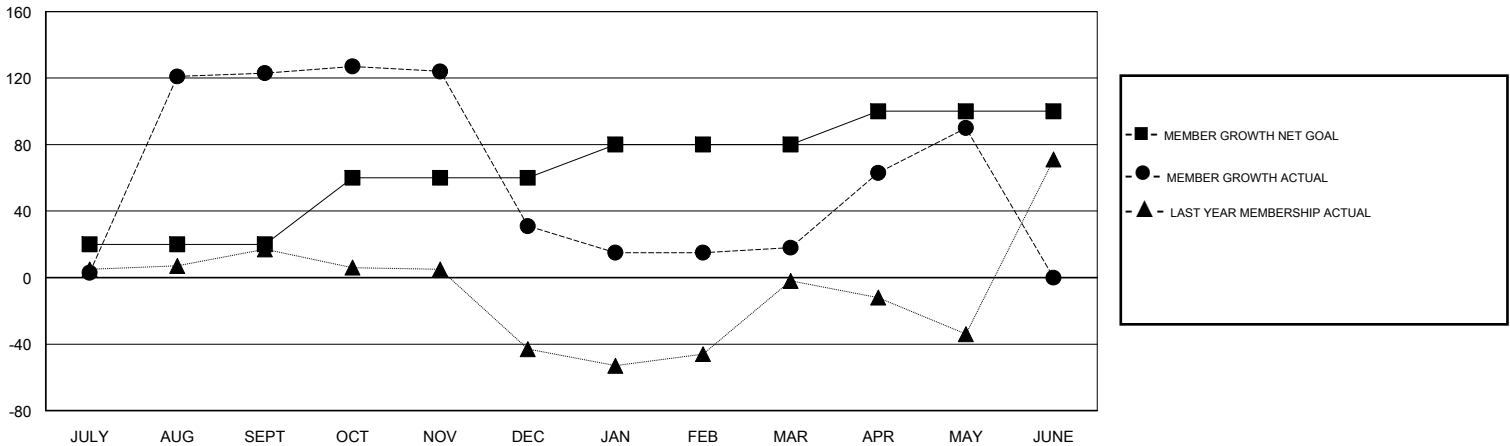
Clubs			
RESULTS FOR 2018-2019			
QUARTER	NEW CLUB GOAL	NEW CLUBS	DROPPED CLUBS
JULY/AUG/SEPT	1	6	1
OCT/NOV/DEC	2	0	2
JAN/FEB/MAR	1	0	1
APR/MAY/JUNE	1	2	0

Members			
RESULTS FOR 2018-2019			
QUARTER	MEMBER GROWTH NET GOAL	MEMBER GROWTH ACTUAL	DROPPED MEMBERS ACTUAL (including transfers)
JULY/AUG/SEPT	20	154	25
OCT/NOV/DEC	40	8	99
JAN/FEB/MAR	20	10	21
APR/MAY/JUNE	20	103	31

GOALS AND ACTUAL NEW CLUBS CUMULATIVE



GOALS AND ACTUAL MEMBERS CUMULATIVE



DROPPED CLUBS: 4	36 CLUBS OF 63 ADDED 1 OR MORE NEW MEMBERS	<u>GENDER DISTRIBUTION</u>	
DROPPED MEMBERS		MALE	1,209 (60.24%)
DECEASED 15	<a href="#">CLICK HERE FOR CUMULATIVE MEMBERSHIP DATA</a>	FEMALE	798 (39.76%)
CLUB CANCELLED 57		Women Percentage Fiscal Year Goal: 39%	
OTHER 104		TOTAL FAMILY UNIT MEMBERS	992
TOTAL 176		FAMILY MEMBERS PAYING HALF DUES	562